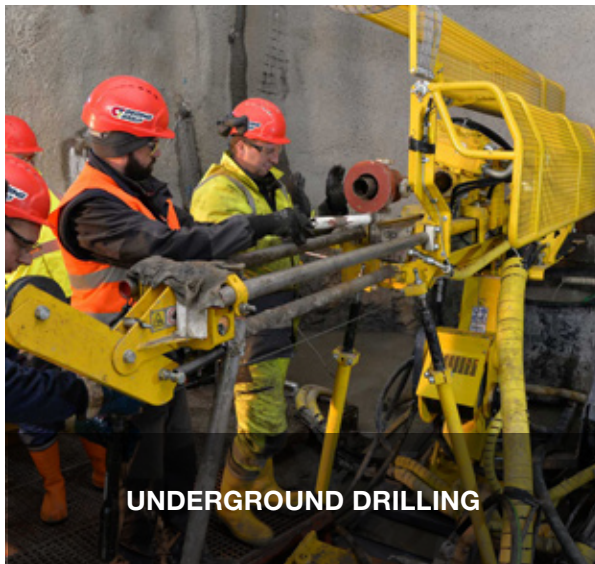




COMPANY PRESENTATION



**UNDERGROUND DRILLING**



**SURFACE DRILLING**

- 1 Drilling
- 2 Engineering geology
- 3 Hydrogeology
- 4 Geophysics
- 5 Mining
- 6 Construction
- 7 Ecology

Copyright (c) 2003. All Rights Reserved.  
Geoing Group d.o.o.





# COMPANY PROFILE

GEOING GROUP d.o.o. has been successfully working on different exploration projects since 2003.

# About Us

**Georing Group d.o.o. offers a services including acquisition, processing and interpretation in the form of reports and presentations, analysis and recommendation for the future studies in the area of:**



- **Geology**
- **Mining**
- **Construction**
- **Ecology**
- **Drilling services**

Georing Group has equipment for surface exploration, geotechnical and groundwater surveys and open-pit and underground mining.

Georing Group conducted regional to detail level researches in order to:

- **Locate and characterize new ore deposits;**
- **Solving structural geological problems;**

- **Solving hydrogeological problems ;**
- **Solving geotechnical problems .;**

**GEOING GROUP** has applied high levels of standardization as follows:

- ISO Standard 14001:2015  
(ENVIRONMENTAL MANAGEMENT SYSTEM)
- ISO Standard 9001:2015  
(QUALITY MANAGEMENT SYSTEM)
- OHSAS 18001 (STANDARD FOR OCCUPATIONAL  
HEALTH AND SAFETY MANAGEMENT SYSTEMS)



# Some of the companies that we worked for successfully:

JP  
Elektroprivreda Srbije



Serbia  
Zijin Copper Doo



- ELECTRIC POWER INDUSTRY of SRPSKA, SERBIA AND MACEDONIA
- SWISS HUMANITERIAN ORGANIZATION FOR HELPING DIZASTERS (SDR)
- DMT, Essen Germany
- Dam 3A at Veliki Krivelj tailing pond
- HiSeis, Australia
- Neves Corvo, Portugal and Republic of Ireland
- IGC, Canada
- Ultra-Balkans, Serbia (Ultra Lithium, Canada)
- Rakita exploration, Serbia
- Krana Drill, Skopje

- Akita University, Japan
- Turkish Embassy in Belgrade
- Capital drilling
- Tilva, Serbia
- Sisecam
- Soda Lukavac, Bosnia and Herzegovina
- Serbia Zijin Copper Doo, Bor
- Naftna Industrija Srbije, Novi Sad
- Rakita exploration, Bor
- Kosovska energetska korporacija, Priština

# DRILLING SERVICES

## Drilling Methods

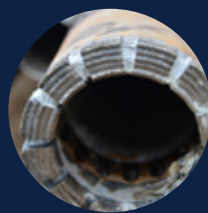


- Surface Wireline
- Core Drilling
- Underground Wireline Core Drilling
- Reverse Circulation Drilling
- Multipurpose Drilling
- Directional Drilling
- Environmental &
- Geotechnical Drilling
- R.A.B. (Rotary Air Blast) Drilling
- Water Well Drilling



**Drilling is performed with the following rigs**

Our rigs are a flexible and can undertake different drilling tasks.



### Drilling Systems

Wireline Core Sizes  
Tri-Cone Sizes  
Hammer Sizes



### Survey / Down the hole equipment

Leica system  
Surveying system  
Core Orientation  
Auslog borehole logging tools (standard operation)



# Our team

We have 7 (seven) graduate engineers, over 20 drillers as full-time employees.

We also engage PhD, M.S. and graduate engineers of geology as part-time employees. Above-mentioned personal structure assure very successful solving geological, hydrogeological, engineering geological, etc. problems.

During the processing of field and laboratory research activities are used by software packages AutoCAD, Corel DRAW, Surfer, Grapher, Well Vision, Geo slope 5, in order to achieve the highest level of technical processing.





## TECHNICAL DRILLING EQUIPMENT

The projected drilling programs are performed by rigs which are able to perform different drilling tasks.





# Our Drilling Machines



## **Christensen CT-20 C**

**Atlas Copco**

Serial: TMG17SEDO131/  
TMG16SEDO337

Year of production: 2016  
/ 2017

Drilling mode: wireline

Depth Capacity:

NQ / 75,7 mm : 2450 m

HQ / 96,0 mm : 1600 m

PQ / 112,6 mm : 1055 m



## **Christensen CT-20**

**Atlas Copco**

Serial: TMG16SEDO337

Year of production: 2016

Drilling mode: wireline

Depth Capacity:

NQ / 75,7 mm : 2450 m

HQ / 96,0 mm : 1600 m

PQ / 112,6 mm : 1055 m



## **MUSTANG 13F1 HD**

**Atlas Copco**

Serial: 8993067026

Year of production: 2013

Drilling mode: wireline,  
conventional, DTH drilling

Depth Capacity:

NQ / 75,7 mm : 1600 m

HQ / 96,0 mm : 1200 m

PQ / 112,6 mm : 850 m



1

**MUSTANG 13F1**

**Atlas Copco**

Serial: 8993067034  
 Year of production: 2013  
 Drilling mode: wireline, conventional, DTH drilling  
 Depth Capacity:  
 NQ / 75,7 mm : 1200 m  
 HQ / 96,0 mm : 800 m  
 PQ / 112,6 mm : 600 m

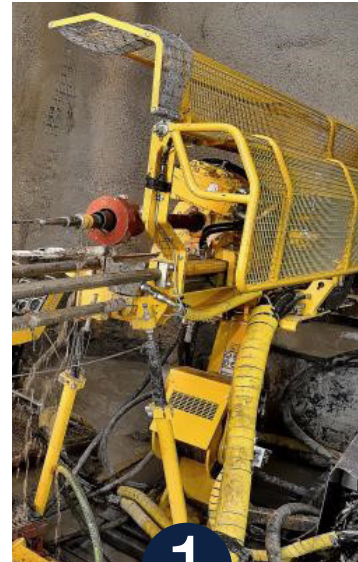


1

**MUSTANG 4F1**

**Atlas Copco**

Serial: OR.09.6990060233.510  
 Year of production: 2007.  
 Drilling mode: wireline, conventional, DTH drilling  
 Depth Capacity:  
 75,7 mm to 150 mm, up to 250 m

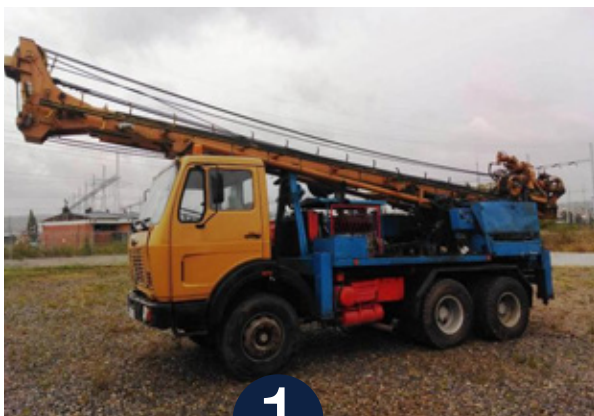


1

**DIAMEC PHC 6**

**EPIROC**

Serial: TMD 18SED0532  
 Year of production: 2018.  
 Drilling mode: wireline  
 Depth Capacity: vertical up/down  
 AO / 48 mm 985/1445 m  
 BO / 60 mm 600/1065 m  
 NO / 75,6 mm : 340/715 m  
 HO / 96,1 mm :155/335 m




1

**B2A-NR30**

**WIRTH**

Serial: 71.794.00-99  
 Year of production: 1984.  
 Drilling mode: RC



A tall, yellow and grey drilling rig stands on a gravel site. Three workers in high-visibility vests and hard hats are positioned around the rig. A small white shed is visible to the left. The background shows a line of trees under a grey sky. A dark blue text box is overlaid on the right side of the image.

OUR RIGS ARE A  
FLEXIBLE AND CAN  
UNDERTAKE  
DIFFERENT  
DRILLING TASKS.

# TAKE 5 – PERSONAL RISK ASSESSMENT



**GEOING GROUP** adopts the **TAKE 5** personal risk assessment program and begins each shift with a "Take 5 for Safety" meeting. The schedule and scope of work anticipated for the day is carefully outlined, hazards inherent to these activities are itemized and discussed. The five steps listed below is the daily topic for the meetings, each step is discussed thoroughly to ensure everybody has a safe and productive shift.

## **Step 1 - Think through the task**

The first step to identifying and controlling the risk we face in a task is to think through all the steps in your task.

## **Step 2 - Look for the Exposure**

The second step is to look for the risk, think about all the steps and ask yourself "What If".

## **Step 3 - Assess the risk**

What is the likelihood of a problem? What are

the consequences of a problem?

## **Step 4 - Remove the risk**

Eliminate it, Substitute it, Apply safety Controls, Apply Engineering Solutions, Protect people, environment, equipment.

## **Step 5 - Do the job safely.**

Monitor your plan for effectiveness, watch for changing conditions if things change go back to step one and start the process over.





# Environment

## **GEOING GROUP is committed to:**

- Protection of the environment.
- Complying with environmental regulations and to respect archeological and cultural sites.
- Maintaining equipment, premises and drill sites in environmentally sound condition.
- Ensuring that acceptable and industry standards are practiced by all employees.
- Assessment of the effect of work on the environment and integrate protective measures into the planning process to prevent or minimize the impact on natural resources.
- Preservation of environmental integrity by complying with applicable Acts and Regulations.
- Application of technologically advanced environmental protection methods.
- Restoration of drill and camp locations to acceptable environmental conditions on termination of project

## **In fulfilling our commitment to protect the environment, we promote:**



## SERBIA

GEOING GROUP DOO

Kraljice Marije Street, 25,  
Belgrade 11000, Republic of Serbia

**Tel.** +381 (0) 11 32-23-534

+381 (0) 11 33-45-967

**E-mail.** [geoing.group@gmail.com](mailto:geoing.group@gmail.com)

## BOSNIA&HERZEGOVINA

GEOING GROUP B

Mese Selimovica Street, 4,  
Bijeljina 76300, Republic of Srpska

## MACEDONIA

GEOING GROUP DOOEL

1596 Street, 28/1-38 Gorce Petrov, Skopje 1000

**Tel.** + 389 (0) 71 39-88-23

**E-mail.** [stamenkovski@geoing.rs-group.mk](mailto:stamenkovski@geoing.rs-group.mk)





HEAD OFFICE

**GEOING GROUP DOO**

Company for geological and geotechnical  
research, engineering and consulting

Kraljice Marije Street 25 | Belgrade 11000 | Republic of Serbia